

MULTIPLE IMAGING MODALITY ISOCENTRICITY PHANTOM

Expedite imaging & treatment coordinate coincidence and isocenter alignment tests for TG-142, including:

— Mechanical

- Laser Alignment
- Graticule Alignment with 6.4mm high-contrast center ball marker

— Planar MV and kV Imaging

- Imaging and treatment coordinate coincidence (single gantry angle and four cardinal angles)

— Cone-beam CT [kV]

- Imaging and treatment coordinate coincidence
- Positioning/repositioning

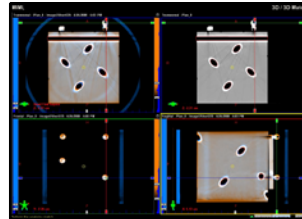
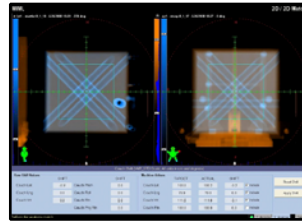


MIMI PHANTOM

Fast, accurate alignment checks

The MIMI (Multiple Imaging Modality Isocentricity) Phantom helps establish mechanical stability of image guidance systems by verifying the isocenter described by the MV, kV and Cone-beam is within accepted 1mm tolerances.

Five bone equivalent rods that traverse the entire phantom are set to intersect at 90 degree angles when viewed in DRRs or 2D projections images. These rods, and a 6.4mm center ball maker, makes it easy to align in either 2D/2D matching or 3D/3D matching for fast verification of isocenter position.



To learn more call (800) 261-4446 or (608) 831-0025
www.standardimaging.com

ADVANCING RADIATION QA™